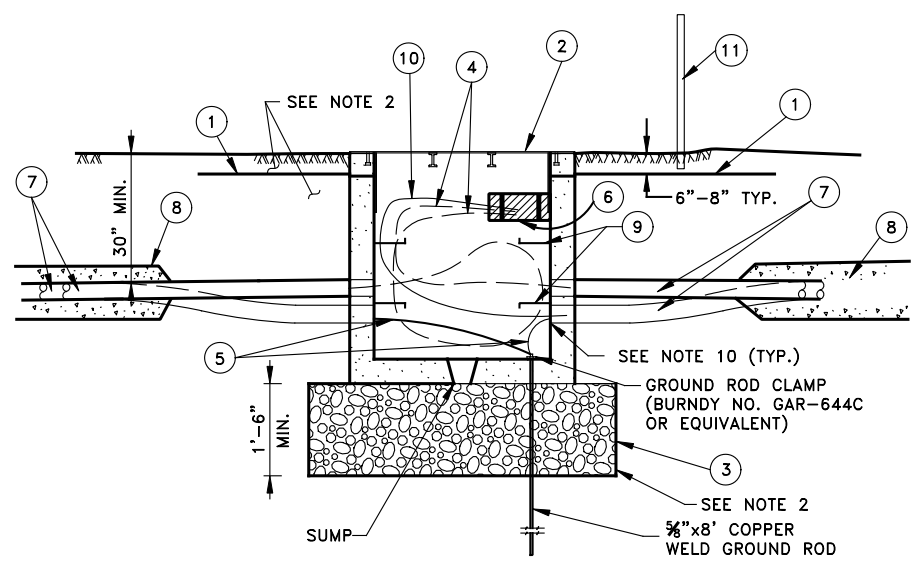


FIBER OPTIC SPLICE PROCEDURE (TOP VIEW)

FIBER BRANCH TO CABINET



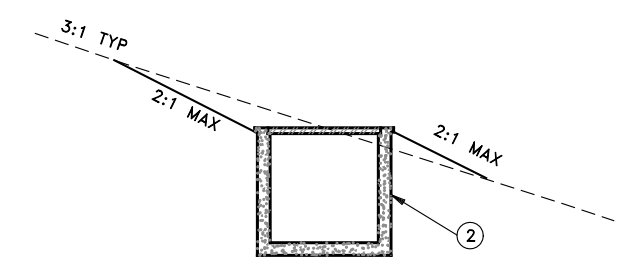
CONDUIT PLACEMENT AND COILING DETAIL SIDE VIEW

MATERIAL LIST	
ITEM #	DESCRIPTION
1	CONDUIT WARNING TAPE
2	ITS MANHOLE AND COVER
3	NO. 57 AGGREGATE PER AASHTO M 43
4	SINGLE MODE FIBER OPTIC CABLE (SMFO)
5	COPPER GROUND WIRE (IF REQUIRED)
6	FIBER OPTIC SPLICE ENCLOSURE
7	4" MULTI-DUCT CONDUIT (TYP) OR AS PER PLANS
8	TRENCH BACKFILL (SEE NOTE 9)
9	RACK & HOOK (EACH WALL TYP)
10	SMFO BRANCH CABLE (WHERE REQUIRED)
11	ITS MANHOLE DELINEATOR (FLEXIBLE TRAFFIC MARKER) - SEE NOTE 11

ITS MANHOLE WIRING DETAILS

NOTES:

- NUMBERS IN CIRCLES REFER TO ITEMS IN MATERIALS LIST.
- BACKFILL BELOW ITS MANHOLE WITH NO. 57 AGGREGATE PER AASHTO M 43. BACKFILL AROUND SIDES OF ITS MANHOLE PER SECTION 705.2.2 AND 705.3.2 OF THE STANDARD SPECIFICATIONS. COMPACTION SHALL BE PER SECTION 203.3.7 OF THE STANDARD SPECIFICATIONS.
- CONDUIT FROM THE TYPICAL TRENCH SECTION SHALL NOT DEFLECT BY MORE THAN 1"/FT FROM THE ALIGNMENT PRECEDING OR FOLLOWING THE ITS MANHOLE.
- TOP OF CONDUITS SHALL BE LOCATED AT LEAST 30" BELOW EXISTING GROUND. CONDUITS AT ITS MANHOLES SHALL DEFLECT NO MORE THAN 1"/FT TO ENTER ITS MANHOLE. CONDUITS SHALL BE FLUSH WITH INSIDE EDGE OF ITS MANHOLE.
- PROVIDE COILED FIBER OPTIC CABLE (TYP 50 FT) AND POWER IN ALL ITS MANHOLES AS PER PLANS.
- 4" MULTI-DUCT CONDUIT (TYP) OR AS PER PLANS
- ALL POWER AND COMMUNICATION CABLES SHALL BE TAGGED WITH PROPER CABLE IDENTIFICATION.
- IF ITS MANHOLE IS INSTALLED IN PAVEMENT OR SIDEWALK, THE TOP OF THE ITS MANHOLE SHALL BE FLUSH WITH THE TOP OF THE PAVEMENT OR SIDEWALK.
- FLOWABLE FILL SHALL NOT BE USED WITHIN 12" FROM THE EDGE OF ITS MANHOLE.
- CONDUIT ENTERING THE ITS MANHOLE SHALL BE FLUSH WITH INSIDE EDGE OF ITS MANHOLE.
- INSTALL FLEXIBLE TRAFFIC MARKER 12" IN FRONT OF EACH ITS PULL BOX WITHOUT DISTURBING BURIED CONDUIT.



INSTALLATION IN SLOPED AREAS

NO.	DESCRIPTION	DATE	BY
REVISIONS (OR CHANGE NOTICES)			

NEW MEXICO DEPARTMENT OF TRANSPORTATION

ITS MANHOLE INSTALLATION DETAILS SHEET 2 OF 2

APPROVED _____	DESIGN ENGINEER	DATE _____
DESIGN BY _____	DRAWN BY _____	CHECKED BY _____

750-03-2/2